

BRIGHTON SENIOR CENTER



Where Active Aging Never Gets Old!

2024

JUNE
JULY

WELCOME!



850 Spencer Road
Brighton, MI 48116



(810) 299-3817



OPEN Monday - Thursday
9:00am - 2:00pm



www.brightonseniorcenter.com



@BrightonSeniorCenter



ABOUT US

The Brighton Senior Center is open to all individuals 50 years+, in and around Livingston County. We offer socialization, education, exciting travel opportunities, information and assistance for those that need it, life enrichment and fitness classes, transportation, volunteer opportunities and much more. Stop in and see us, you might be surprised with what you find.

ANNOUNCEMENTS

REMINDER!

Body Spot Silver

**MOVES TO THE HIGH
SCHOOL CAFETERIA**

Starting JUNE 18th!

IT'S TIME!!

**Annual Membership
Renewal**

RENEW BY JULY 1st

**Get entered to win \$100
Meijer Gift Card!**

GRANDPARENT CAMP

**Bring your grandkids and
let's have some fun!**

**CONTACT THE CENTER FOR
MORE INFORMATION**

Pre-Registration REQUIRED

KEEHN-GRIFFIN

FUNERAL HOME



TRADITIONAL AND CREMATION SERVICES

706 W. Main Street, Brighton

810-229-9871



www.keehngriffinfuneralhome.com



Residential • Commercial

*For Fast, Friendly and
Affordable Junk Removal in
Southeast, MI Call:*

734.648.5865

*We offer Discounts to
Seniors and Veterans*

We Are a **Local Company**
Serving the **Local Community**

www.mittenjunkremoval.com

Bringing New Life
to Senior Living®



For a tour or more information
CALL 810-229-9190



ADVANCED MEDICAL SOLUTIONS, INC.

"YOUR COMPLETE HOME MEDICAL EQUIPMENT COMPANY"

With Locations in:

Ann Arbor, Brighton, Fowlerville & Howell

- Bathroom Aids
- Daily Living Aids
- Diabetic Care
- Mastectomy Care
- Medical Supplies
- Mobility Aids
- Orthotics & Braces
- Respiratory Therapy
- Sleep Therapy



1-800-248-2229

Fax: 1-800-552-9443



orders@amsdme.com

www.amsdme.com

**TAKE AN IN-PERSON TOUR AND SEE WHY SO
MANY SENIORS CALL AMERICAN HOUSE HOME!**

Senior Living Communities

700 Napa Valley Drive
Milford, MI 48381

(248) 676-2121

AmericanHouse.com/Milford



Independent Living



Brighton Comfort Care Senior Living

Assisted Living & Memory Care Community

All Inclusive Pricing Options Available

24-Hour Care Provided For Your Loved One To
Help Manage And Accomplish Life's Daily Tasks

Multiple Floor Plans With Privates Bathrooms

Rooms Starting As Low As \$4,900 A Month! Contact Us For More Information.

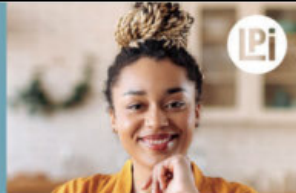
1320 Rickett Rd., Brighton, MI 48116 | (810) 247-8442 | www.ComfortCareSL.com

WE'RE HIRING!

AD SALES EXECUTIVES

BE YOURSELF.
BRING YOUR PASSION.
WORK WITH PURPOSE.

- Paid training • Some travel
- Work-life balance
- Full-Time with benefits
- Serve your community



Contact us at
careers@4lpi.com or
www.4lpi.com/careers



Lisa Tam

BROKER/OWNER

SRES

Over 25 Years
of Experience

810-287-1344

www.thetamteam.com



As your Senior Real Estate Specialist, let me guide you
through the process of buying or selling your home.

LET'S PLAN FOR THE FUTURE.

GIVE ME A CALL TODAY!

HEATHER AESCHLIMAN

CERTIFIED FINANCIAL PLANNER™

2022 HOWELL CHAMBER OF COMMERCE

COMMUNITY IMPROVEMENT PERSON OF THE YEAR

CALL TODAY: (810) 316-5041

EMAIL: HEATHER@7PWEALTH.COM



Securities offered only by duly registered individuals through AE Financial Services, LLC (AEFS), member FINRA/SIPC. Investment advisory services offered only by duly registered individuals through AE Wealth Management, LLC (AEWM), a Registered Investment Adviser. Insurance offered through Jones Retirement Advisors. Jones Retirement Advisors is not an affiliated company with AEFS or AEWM.

Beltone

- Free Hearing Screening
- Free Video Otoscope exams
- Free 10 point check ups on your current hearing aids

Come in for a free screening and receive a \$20 gift card!*

Brighton -LOCATIONS- Howell
8023 Grand River Ave, Suite 400 114 W. Highland Rd, Suite 200

*Gift card valid at Amazon, some restrictions may apply.

*The worst thing you can
do for your hearing is wait!*
CALL 810-355-2110 NOW!

beltonehearingaid.com



For ad info. call 1-800-477-4574 • www.4lpi.com

15-0822

BRIGHTON SENIOR CENTER

FATHER'S DAY



GAMES - FOOD - FUN

BBQ PARTY

JUNE | 13TH | 12-2PM

****SIGN UP BY JUNE 10TH!****

\$10
MEMBERS
\$15 NON-MEMBERS

SPONSORED BY
BROOKDALE
BRIGHTON
SENIOR LIVING SOLUTIONS

Gone but not forgotten

Join us for our annual
Potluck gathering to celebrate
our Brighton Senior Center
friends that are gone and
the memories that remain.

Memorial Potluck

Tuesday, July 23rd at 12:00pm
****MUST Sign up by July 18th****

\$FREE with a dish to share

*Woodland Village will be providing the main dish -
please sign up to bring a dish to share!*



You're Invited!

Join us for
pizza, salad & cake!

Birthday Celebration Luncheons

June 27th & July 25th
at 12:00pm

Sign-up REQUIRED 1 week prior
**We will NOT add people after this date!!!*

Members: \$5.00 Non-Members: \$10.00
(June & July Birthdays: FREE!)

Sign up at the Center, online
or by calling (810) 299-3817

BIRTHDAY FLOWERS & LUNCH PROVIDED BY

BRIGHTON
Senior Center



Why drive around town wasting gas,
when you can shop at multiple sales in one stop!

21ST ANNUAL COMMUNITY GARAGE SALE & FLEA MARKET

GARAGE SALE!



Saturday, JUL 27th

8am-2pm
BHS*
parking lot

**RAIN
or
SHINE!**

FOR MORE INFORMATION
PLEASE CALL (810) 299-3818 -OR-
EMAIL VALENTIJ@BRIGHTONK12.COM

**Brighton High School (7878 Brighton Rd, Brighton, MI)*



JUNE 2024



MONDAY

TUESDAY

WEDNESDAY

THURSDAY

FRIDAY

<p>Call us (810) 299-3817 CHECK OUT OUR WEBSITE! www.BrightonSeniorCenter.com FOLLOW US ON FACEBOOK! </p>	<p>Join us for lunch M-Th 11:30am-12:30pm MUST PRE-ORDER 24 HRS IN ADVANCE \$6.00/MEAL PROVIDED BY BAS</p>	<p>REMEMBER: Last Day of lunch service is 6/11 and will resume after Labor Day.</p>	<p>Please REMEMBER... Many of our activities require pre-registration by certain dates!!!</p>	<p>BUILDINGS: BECC - 125 S. Church St BHS - Brighton High School HAW - Hawkins Elementary</p>
<p>3 10:00 Euchre 10:00 Balance & Strength 12:00 Let's Journal 12:30 Drop-In Poker Nurses Foot Care (by appt)</p>	<p>4 9:00 Body Spot Silver (BECC) 11:00 Chair Yoga 11:00 Name that Tune - Luncheon 12:30 Bingo 6:00 Protect Your Assets</p>	<p>5 9:00 Tai Chi/QiGong 10:00 Euchre 10:00 Mahjong 12:30 Drop-In Poker 1:00 Tai Chi/QiGong 6:00 Social Security Q&A</p>	<p>6 9:00 Body Spot Silver (BECC) 10:00 Whole Brain Exercise 11:00 Chair/Mat Yoga 12:00 Pinochle 12:30 Bingo 7:00 Intro to Watercolor</p>	<p>7 CLOSED</p>
<p>10 10:00 Euchre 10:00 Balance & Strength 11:00 Cooking w/Maureen 12:30 Drop-In Poker 7:00 School Board Mtg (BECC)</p>	<p>11 9:00 Body Spot Silver (BECC) 11:00 Chair Yoga 12:30 Bingo</p>	<p>12 9:00 Saganing Casino 9:00 Tai Chi/QiGong 10:00 Euchre 10:00 Mahjong 12:30 Drop-In Poker 1:00 Tai Chi/QiGong 6:30 Zumba (HAW)</p>	<p>13 9:00 Body Spot Silver (BECC) 10:00 Whole Brain Exercise 11:00 Chair/Mat Yoga 12:00 Father's Day BBQ NO BINGO 6:00 Estate Planning Basics 7:00 Intro to Watercolor</p>	<p>14 CLOSED</p>
<p>17 9:30 Grandparent Camp 10:00 Euchre 10:00 Balance & Strength 12:00 Summer Wreath 12:30 Drop-In Poker</p>	<p>18 9:00 Body Spot Silver (BHS) 9:30 Grandparent Camp 11:00 Chair Yoga 11:00 4th of July T-Shirt 12:30 Bingo</p>	<p>19 9:00 Tai Chi/QiGong 9:30 Grandparent Camp 10:00 Euchre 10:00 Mahjong 12:30 Drop-In Poker 1:00 Tai Chi/QiGong Nurses Foot Care (by appt) 6:30 Zumba (HAW)</p>	<p>20 9:00 Body Spot Silver (BHS) 9:30 Grandparent Camp 10:00 Whole Brain Exercise 11:00 Chair/Mat Yoga 12:00 Pinochle 12:30 Bingo 7:00 Intro to Watercolor</p>	<p>21 CLOSED 6pm Beach Blanket Bingo (Pre-Registration Required!)</p>
<p>24 10:00 Euchre 10:00 Balance & Strength 12:30 Drop-In Poker</p>	<p>25 9:00 Body Spot Silver (BHS) 11:00 Chair Yoga 11:00 Lunch & Learn 12:30 Bingo</p>	<p>26 9:00 Tai Chi/QiGong 10:00 Euchre Tournament 10:00 Mahjong 1:00 Tai Chi/QiGong 6:30 Zumba (HAW)</p>	<p>27 9:00 Body Spot Silver (BHS) 10:00 Whole Brain Exercise 11:00 Chair/Mat Yoga 12:00 Pinochle 12:00 Birthday Celebration 1:00 Modified Bingo Nurses Foot Care (by appt)</p>	<p>28 CLOSED</p>



JULY 2024

MONDAY

TUESDAY

WEDNESDAY

THURSDAY

FRIDAY

1 10:00 Euchre 10:00 Balance & Strength 12:30 Drop-In Poker <i>Nurses Foot Care (by appt)</i>	2 9:00 Body Spot Silver (BHS) 11:00 Chair Yoga 12:30 Bingo	3 9:00 Tai Chi/QiGong 10:00 Euchre 10:00 Mahjong 12:30 Drop-In Poker 1:00 Tai Chi/QiGong	4 CLOSED <i>Happy 4th of July!</i>	5 CLOSED
8 9:30 Grandparent Camp 10:00 Euchre 12:30 Drop-In Poker	9 9:00 Body Spot Silver (BHS) 9:30 Grandparent Camp 11:00 Chair Yoga 12:30 Bingo	10 9:30 Grandparent Camp 10:00 Euchre 10:00 Mahjong 12:30 Drop-In Poker	11 9:00 Body Spot Silver (BHS) 9:30 Grandparent Camp 10:00 Whole Brain Exercise 11:00 Chair/Mat Yoga 12:00 Pinochle 12:30 Bingo <i>6:00 Protect your Assets</i>	12 CLOSED
15 10:00 Euchre 10:00 Balance & Strength 11:00 Cooking w/Maureen 11:00 Print Making w/Gel Plate 12:30 Drop-In Poker	16 9:00 Body Spot Silver (BHS) 11:00 Chair Yoga 12:30 Bingo 12:30 2U Vision Shop <i>7:00 Basic Italian</i>	17 10:00 Euchre 10:00 Mahjong 12:30 Drop-In Poker <i>Nurses Foot Care (by appt)</i>	18 9:00 Body Spot Silver (BHS) 10:00 Whole Brain Exercise 11:00 Chair/Mat Yoga 12:00 Pinochle 12:30 Bingo <i>7:00 Basic Italian</i>	19 CLOSED
22 10:00 Euchre 10:00 Balance & Strength 11:00 Van Gogh - Sunflowers 12:30 Drop-In Poker	23 9:00 Body Spot Silver (BHS) 11:00 Chair Yoga 12:00 Memorial Potluck NO BINGO TODAY! <i>7:00 Basic Italian</i>	24 10:00 Euchre 10:00 Mahjong 12:30 Drop-In Poker	25 9:00 Body Spot Silver (BHS) 9:30 Intro to Watercolor 10:00 Whole Brain Exercise 11:00 Chair/Mat Yoga 12:00 Birthday Celebration 1:00 Modified Bingo <i>Nurses Foot Care (by appt)</i>	26 CLOSED
29 10:00 Euchre 10:00 Balance & Strength 12:30 Drop-In Poker	30 9:00 Body Spot Silver (BHS) 11:00 Chair Yoga 12:30 Bingo	31 10:00 Euchre Tournament 10:00 Mahjong <i>6:00 Travel Club</i>	BUILDINGS: BECC - 125 S. Church St BHS - Brighton High School HAW - Hawkins Elementary Call us (810) 299-3817 CHECK OUT OUR WEBSITE! www.BrightonSeniorCenter.com FOLLOW US ON FACEBOOK!	

FUN & GAMES

Page 06



LIBRARY

Free to members!
Donate, borrow, read!!!

Weekly Bingo

TUESDAYS & THURSDAYS
12:30 PM

Themed Basket Bingos

6-9PM
BRIGHTON SENIOR CENTER
BEACH BLANKET
HALLOWEEN
TURKEY
UGLY SWEATER



JUNE 21ST
OCTOBER 18TH
NOVEMBER 15TH
DECEMBER 13TH

We're Open!!
Stop in
and shop!



shop



Billiards

Come play during open hours
Monday-Thursday
9am-2pm



Drop-In Poker

Mondays &
Wednesdays
12:30PM



Lyon Township
off Milford Rd. Across
from Coyote Golf Course
28413 Abbey Ln.
New Hudson, MI
(248) 437-6550

Abbey Park
LYON TWP.

INDEPENDENT SENIOR LIVING

Live here,
for the best of your life!®

abbeypark.com

MALA
MICHIGAN ASSISTED LIVING ASSOCIATION

Come in for a tour
and free lunch.



Simplify

ESTATE PLANNING

(888) 474-1230
 contact@simplifyestate.com
 simplifyestate.com/

Living Trusts | Wills | Health Care Power of Attorney | Financial Power Of Attorney

THE BEST TIME TO START PLANNING IS TODAY



Pinochle

Thursdays 12pm

Weekly Euchre
Every Monday and Wednesday - 10am

Euchre Tournaments

June 26

July 31

10:00 AM

Brighton Senior Center

\$7 per person at the door



****Three cash prizes** 50/50 Raffle!**

Potluck style lunch - Please bring a dish to share or contribute \$10 to the potluck fund.



Mahjong Club
Wednesdays 10am

Learn Mahjong
Call for info

Creative Maker Space

NOW OPEN!

Are you creative?

Do you like to tinker with craft projects?

Check out our NEW *Creative Maker Space*

located in the Arts & Crafts Room!



Available supplies include: Card making, knitting/crocheting, painting, jewelry, beading, felt and more!

It's All About Family!

HAVE YOU PROTECTED THEM?



To Get More Information call (844) 885-4200
or online at www.MichiganEstatePlanning.com

Life is Complicated Enough.
Protecting Your Family Shouldn't Be...

If Crisis Strikes, You Risk:

- Losing Control
- Additional Stress on Your Family
- The Loss of What You Spent a Lifetime Building

Proper Planning Ensures You:

- Maintain Control of Your Assets for the Sake of The Family
- Give Control to Those you Trust Most, When You're not Able to Act
- Remain Home Without Stress on the Family, Should the Need for Long Term Care Arise
- Keep Your Family's Business Private

LifeCare Planning Protects Your Family From:

- The Government
- Taxes
- Lawsuits
- Nursing Homes
- Those That Want to Take Your Assets From You

Discover:

- Government Assistance to Help Pay for Care at Home
- Up to \$2,120 a Month in Veteran Benefits to Assist with Care at Home or Assisted Living



Seen on TV Weekly
Real Possibilities
By AARP
Michigan

1024 E. GRAND RIVER AVE., STE A | BRIGHTON MI 48116
SATELLITE OFFICES | ANN ARBOR | BLOOMFIELD HILLS | LANSING | LIVONIA | NOVI
P. 844.885.4200 | F. 888.390.5041 | WWW.MICHIGANESTATEPLANNING.COM

TRAVEL

Page 08

We've teamed up with Timeless Memories, Adventures and Events to bring you exciting local, domestic & international travel opportunities! Visit www.BrightonSeniorCenter.com/travel or our travel display at the center for more information about traveling in 2024 & 2025!

Most trips have sign-up deadlines months in advance... so be sure to check early so you don't miss out!!

****Senior Center Membership is not required for travel.**

TRAVEL & DAY TRIPS

Finger Lakes Region (JUN)

Saugatuck Dunes & Boat Tour (JUN)

Yellowstone & the Wild West (JUN)

Detroit Tigers Game (JUL)

Ark Encounter (JUL)

Ford House & Gardens (AUG)

Canadian Rockies & Glacier National Park (AUG)

Dow Gardens and Forest Canopy Walk (AUG)

Idaho's Resorts and Rivers (SEPT)

Utah's "Mighty Five" National Parks (SEPT)

TRAVEL & DAY TRIPS cont'd

Michigan Princess Riverboat Luncheon (OCT)

Halloween in the Hudson River Valley (OCT)

Thunder Bay (OCT)

Shipshewana with Lights of Joy Tour (NOV)

Colorful Costa Rica (NOV)

Switzerland & Christmas Markets on Rhine River (DEC)

Washington D.C. - A Capitol Christmas (DEC)

Hawaii 3 Island Adventure (FEB 2025)

Great Trains and Grand Canyons (APR 2025)

Iceland Explorer (MAY 2025)

- For questions regarding TRAVEL please contact Barb Smith at Timeless Memories, Adventures and Events (248) 497-0291 or TimelessMemoriesAnE@gmail.com.
- To register for travel visit BrightonSeniorCenter.com/travel print the form and mail/drop off with a check to the Senior Center).
- You can also pick up any of the forms at the Senior Center.



Explore the World

LIVINGSTON COUNTY TRAVEL CLUB

BRING YOUR "WISH LIST" FOR DAY TRIPS, SHORT VACATIONS AND BIG ADVENTURES!

NEXT MEETING
WEDNESDAY, JULY 31
AT 6:00PM
BRIGHTON SENIOR CENTER
850 SPENCER RD, BRIGHTON

PLEASE REGISTER
www.TimelessMemoriesAnE.com

QUESTIONS? CONTACT BARB
TimelessMemoriesAnE@gmail.com

Let's Go!

YEARLY MEMBERSHIP
\$10 PER FAMILY

CASINO TRIP

To Firekeepers

AUGUST 8, 2024

\$45 MEMBERS
\$50 NON-MEMBERS

TRIP INCLUDES
+ BUS TRANSPORTATION
+ \$20 FREE SLOT PLAY
+ \$5 IN POINTS

**SPACE IS LIMITED!!!
REGISTER BY JULY 25!!!**

PICKUP LOCATION
BRIGHTON SENIOR CENTER
850 SPENCER RD
BRIGHTON, MI

BUS DEPARTS AT 9:00AM
RETURNS APPROX 6:00 PM

REGISTER (810) 299-3817
www.BRIGHTONSENIORCENTER.COM

Daily Lunches

BAS Salads -\$6.00 each
M-TH, 11:30am-12:30pm
Must pre-order by 12pm the day before
Available Sept-June



Eye Wear and Eye Examinations

2U Vision brings a complete optical store to us every two months. They offer stylish, comfortable, hypoallergenic, and high-quality eye wear with an extended warranty for adults 50+. Contact them to schedule an eye exam in the privacy of your own home. Call 947-479-1039 or send an email to info@2UVision.com.



2UVision will be here on July 16th at 12:30pm.

Nurses Foot Care

Ava Passino, RN, BCGN, is now accepting new patients as openings become available. Each 1 hour session includes: foot/leg assessment, warm foot bath, nail trimming and therapeutic foot/leg massage. Fee is \$42 and is tax deductible, but not insurance billable.



To schedule an appointment call Ava at (313) 303-7836.

Cooking with Maureen



Join Maureen Kimmel from Pampered Chef to learn recipes using time saving tools, quick tips for healthy eating and to discover the chef in you!

Monday, July 15th at 11am - Space is LIMITED!

NEW Personal Care Cabinet

Check out the NEW personal care cabinet located in the hallway by the bathrooms. Inside you'll find a variety of items such as adult undergarments, toiletries, covid tests, masks and more! All items are available to take as needed. If you have items to donate they MUST be unopened/used and dropped off at the front desk.

Hearing Checks

Chris from Beltone will be conducting FREE hearing tests, checking current hearing aids, replacing batteries and more.



Call the center for specific dates & times.

Medical Loan Closet

Canes, Crutches, Shower Chairs, Toilet Risers, Wheelchairs, Walkers, Elder Care Supplies.

Call (810) 299-3817, option 2



Panera/ Busch's Donations

Free donations from Panera Bread and Busch's are available to members inside the Senior Center. All items are available on a first come basis.



PANERA - Tuesdays
BUSCH'S - Tues/Thurs



Resource Advocate

Provided by Livingston County Catholic Charities. Information & assistance with: Housing, Legal Aid, Food Assistance, Care Giving, In-Home Services, Tax Aid, Medicare/Medicaid, Counseling, etc.



To schedule an appointment call Mary Heymes (517) 545-5944 ext. 136 or mary@livingstoncc.org.

Transportation

Rides available for a fee to medical appointments, grocery stores, banking, hair salons, etc. Bus service is not available to/from surgical procedures. Driver does not stay for medical appointments. Please note, there is a 15 minute variance for each pick up.



To schedule a ride, call (810) 299-3817, Option 3

Title VI of the Civil Rights Act of 1964 prohibits discrimination based on race, color, or national origin in programs and activities receiving Federal financial assistance. Specifically, Title VI provides that "no person in the United States shall, on the ground of race, color, or national origin, be excluded from participation in, be denied the benefits of, or be subjected to discrimination under any program or activity receiving Federal financial assistance" (42 U.S.C. Section 2000d).

Fitness Classes

Body Spot Silver	Tu/Th	9-10:30am
Chair Yoga	Tue	11-11:45am
Tai Chi & QiGong	Wed	9-10:00am & 1-2pm
Balance & Strength	Mon	10-10:45am
Whole Brain Exercise	Thur	10-10:30am
Chair/Mat Yoga	Thur	11-11:45am
Zumba w/Joanie	W/Sa	6:30pm/10am

Visit our website or stop by the center to view class descriptions, dates and to register!

Take some time to enjoy nature this summer!

CLASSES & ACTIVITIES

Page 10

Register Online at www.brightoncommunityed.com,
call (810) 299-3817, or stop by the center.

BODY SPOT SILVER

ANNUAL (T&TH) | 9:00AM | \$99

Total body workout includes: cardiovascular, floor exercises, weight training, and yoga pilates.

ESTATE PLANNING BASICS

JUN 13 | 6:00PM | \$10

Learn how to prevent your assets from going through probate, protect them from various taxes, retain control of your affairs!

WELCOME SUMMER WREATH

JUNE 17 | 12:00PM | \$50

Let's celebrate Summer by crafting a SUMMER WREATH!! Supplies included in the class price!

FOURTH OF JULY T-SHIRT

JUNE 18 | 11:00AM | \$40

Show off your patriotic spirit in a T-Shirt you design and create yourself! Supplies included in the class price!

CHAIR YOGA

JUN 25 - AUG 6 (TU) | 11:00AM | \$25

Yoga poses done in a chair that are appropriate for all fitness levels. No experience necessary.

CHAIR/MAT YOGA

JUN 27 - AUG 8 (TH) | 11:00AM | \$25

Start in a chair and when ready use the chair as a prop while we transition to the mat for 15 minutes of mat yoga.

BALANCE & STRENGTH

JUL 1 - JUL 29 | 10:00AM | \$FREE

Join PT Solutions physical therapists and learn how to strength train safely and effectively in a fun environment.

PROTECT YOUR ASSETS

JUL 11 | 6:00PM | \$10

Discuss ways to avoid the nursing home, in-home care options, LTC insurance, hybrids and more.

PRINT MAKING W/ A GEL PLATE

JUL 15 | 11:00AM | \$80

Using a Gelli Plate you'll create unique and beautiful artwork! There is no limit to what you can do. Supplies included.

WHOLE BRAIN EXERCISE

JUL 18 - AUG 22 | 10:00AM | \$25

Integrates L & R sides of the brain and body with exercise, vision, rhythm, and auditory processing to improve memory..

VANGOGH INSPIRED ART -SUN FLOWERS

JULY 22 | 11:00AM | \$60

Learn about various adhesives, paints, papers, transfers, and transparencies while we explore collage techniques. Supplies included.

BASIC GERMAN

JUL 30 - AUG 8 | 7:00PM | \$75

In this short class you will learn german words, proper pronunciation and a bit of grammar too.



Dementia Diagnosis?
We can help.

Call today (800)990-6030



- Elder Law
- Estate Planning
- Probate
- VA Benefits
- Medicaid
- Elder Care Navigation

3 Locations: Brighton, Grand Blanc & Rochester Hills | 800-990-6030 | www.mannorlawgroup.com



DOWNSIZING & MOVING MADE EASY

Learn what steps you can take to help ease the stress of downsizing and making a move.

Details:

Tuesday, June 25th
11 am - 12 pm
Brighton Senior Center
850 Spencer Rd in Brighton

Topics include:

- Making the decision to move
- Considering your living options
- How to begin minimizing your belongings
- Timing the sale of your home
- Putting your decisions into action
- Resources for a stress-free transition

To Register:

Debbie Johnson/248-979-6420
Debbie@movingwithcare.com

Lunch & Learn

movingwithcare.com
Debbie Johnson
Seniors Real Estate Specialist
(248) 979-6420



Corrigan Moving Systems
Brandon Becker
District Manager
(734) 973-4411



Mitten Junk Removal
Mike Mayernik
Co-Owner
(810) 923-6991



Spreading Knowledge and Awareness of Elder Abuse

A Month of Activities for Seniors

FWLERVILLE HAMBURG HARTLAND HOWELL PUTNAM TOWNSHIP

- JUNE 1**
12:00 PM-3:00 PM
SENIOR DAY AT FWLERVILLE LIBRARY
Kick-off Elder Abuse Awareness month with ice-cream, give-aways and a movie at 1:00.
- JUNE 4**
11:00 AM-1:00 PM
NAME THAT TUNE
Lunch is provided. Register in advance at the Brighton Senior Center.
- JUNE 5**
12:00 PM-2:00 PM
BINGO
Register in advance at the Putnam Township Senior Center.
- JUNE 14**
11:00 AM-1:00 PM
BARBEQUE
Register in advance at the Hamburg Senior Center.
- JUNE 18**
11:00 AM-2:00 PM
YOGA
Register in advance at the Hartland Senior Center.
- JUNE 27**
11:30 AM-1:30 PM
BIRTHDAY BASH
Close-out Elder Abuse Awareness Month with a party at the Howell Senior Center. Register in advance at the Howell Senior Center.

LONELINESS & ISOLATION: THE NEXT HEALTH CRISIS June 11, 9:00 AM-3:00 PM

Livingston County EMS Building, 1911 Tooley Rd, Howell, MI 48855

Speakers from IHA Medical Group, a therapist from Livingston County Catholic Charities and a veteran talk about the effects that isolation and loneliness can have on you mentally, emotionally, and physically. Hear suggestions on programs that Livingston County Catholic Charities can offer to help combat isolation in your life and learn who to call for resources in the community to address health issues.

Call Beth Newman, LCCC Elder Abuse Specialist, with questions at 517-545-5944.

There are no charge for this event, but donations are welcome.

Lunch is provided.

JUNE IS ELDER ABUSE AWARENESS MONTH

Do not cast me aside in my old age; as my strength fails, do not forsake me. Psalms 71:9



**Seniors
Helping
Seniors®**

Need Help or Want to Help?

Now Serving Seniors & Hiring
Caregivers in the Greater
Livingston Area

Let's connect!

shslivingston.com

810 • 412 • 7270

info@shslivingston.com



VIP Medicare Choices

"Licensed to educate & assist in ALL your insurance options. Personalized service you can trust."

Call/Text **Vyte J. Paquette**: 248.880.3786

Visit our website: **VIPMedicareChoices.com**



LET'S GROW YOUR BUSINESS

Advertise in our Newsletter!

CONTACT ME

Eileen Frazier

efrazier@lpicommunities.com

(800) 477-4574 x6309

BRIGHTON SENIOR CENTER



850 Spencer Road
Brighton, MI 48116



PRESORT STD
US POSTAGE
PAID
BRIGHTON, MI
PERMIT NO. 10

It's Time to Renew!

Our Staff

Jodie Valenti, Director
(810) 299-3818
valentij@brightonk12.com

Deb Perry, Asst. Activities Director
(810) 299-4018
perryd@brightonk12.com

Diana Walsh, Front Desk
(810) 299-3817, option 1
seniorcenter@brightonk12.com

David Passino, Bus Driver
(810) 299-3817, option 3
passind@brightonk12.com

Barb Smith, Travel Coordinator
(248) 497-0291
timelessmemoriesane@gmail.com

Looking to Volunteer?

If you're looking to make a difference in our community and enjoy working with actively aging adults, we have several volunteer opportunities available. Stop by or give us a call today!

DONATIONS ARE APPRECIATED!

- Used & new household items (including some furniture)
- Used & new craft supplies
- Returnable bottles & cans
- Non-perishable food
- Personal care items (toiletries, etc)
- In-kind

THEY ARE TAX DEDUCTIBLE TOO!

BRIGHTON SENIOR CENTER

Annual Membership Drive

**RENEW YOUR MEMBERSHIP -
BECOME A NEW MEMBER**

JUNE 1 - 30, 2024

**ALL MEMBERSHIPS (RENEWAL OR NEW)
RECEIVED BY JUNE 30, 2024
WILL BE ENTERED INTO A DRAWING TO WIN A
\$100 MEIJER GIFT CARD!!**

*MINIMUM \$25 MEMBERSHIP REQUIRED TO BE ENTERED

ANNUAL MEMBERSHIP OPTIONS	WINNER WILL BE NOTIFIED
BASIC = \$25 (1 ENTRY)	JULY 10TH
SILVER = \$50 (2 ENTRIES)	
GOLD = \$100 (4 ENTRIES)	

SIGNUP OR RENEW TODAY!

DISCLAIMER

Although the Brighton Senior Center provides information through workshops, seminars and advertising for senior services, we do not endorse any private company. Our goal is to inform our members of the availability of services that may enhance their lives outside of the Center. As a consumer, you are encouraged to independently research and ask for references.

We appreciate all the support we receive from our local business community and health care providers.